

# Proposal to Include Dedicated Pickleball Courts in the Development of Bellevue Airfield Park

June 2022

# Background

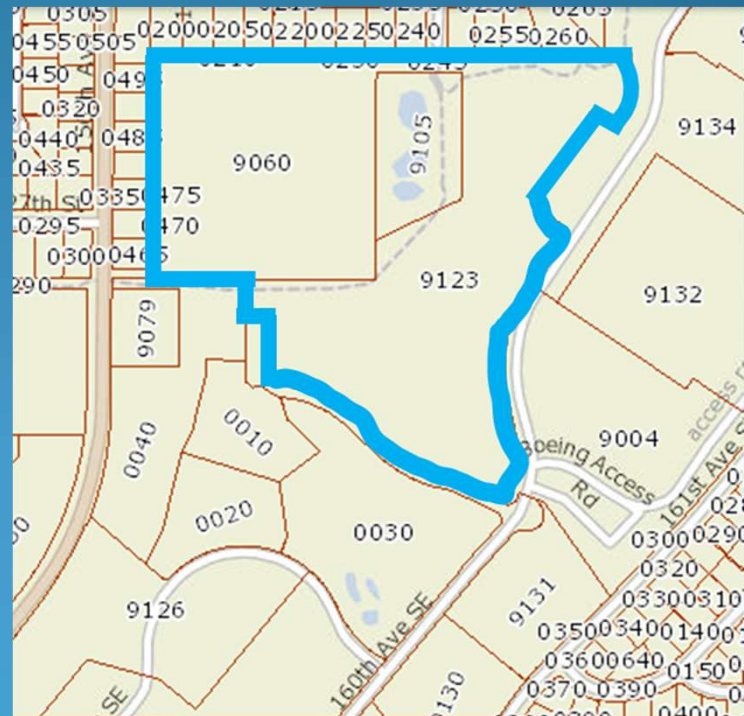
- Responding to community input\*, Bellevue Parks & Open Space System Plan (2022) has included the need for more pickleball courts in Bellevue
- Two-prong approach\*:
  - Near-term solution
    - Convert some existing tennis courts to dual-usage courts shared between tennis and pickleball players
    - To be implemented in the near-future
  - Long-term solution
    - Develop dedicated pickleball courts in 8-court (or more) clusters
    - Potential locations of courts are not identified in the System Plan

\* Court Usage Data and Dual-Usage Proposal (10-7-2021).pdf

\* Implementation Dual-Usage Courts (01-25-2022).pdf

# Bellevue Airfield Park

- The 27-acres park is located in the Eastgate neighborhood
- It is one of the few large undeveloped area in Bellevue
- Consists of 3 parcels (enclosed by blue line in figure) owned by Parks Department
  - Parcel 9060 - 10.5 acres
  - Parcel 9105 - 2.5 acres
  - Parcel 9123 - 14.6 acres
- Parcel 9123 is more level and easier to develop
  - Several large ball fields were proposed in the 2012 Bellevue Airfield Park Master Plan (which was not implemented)

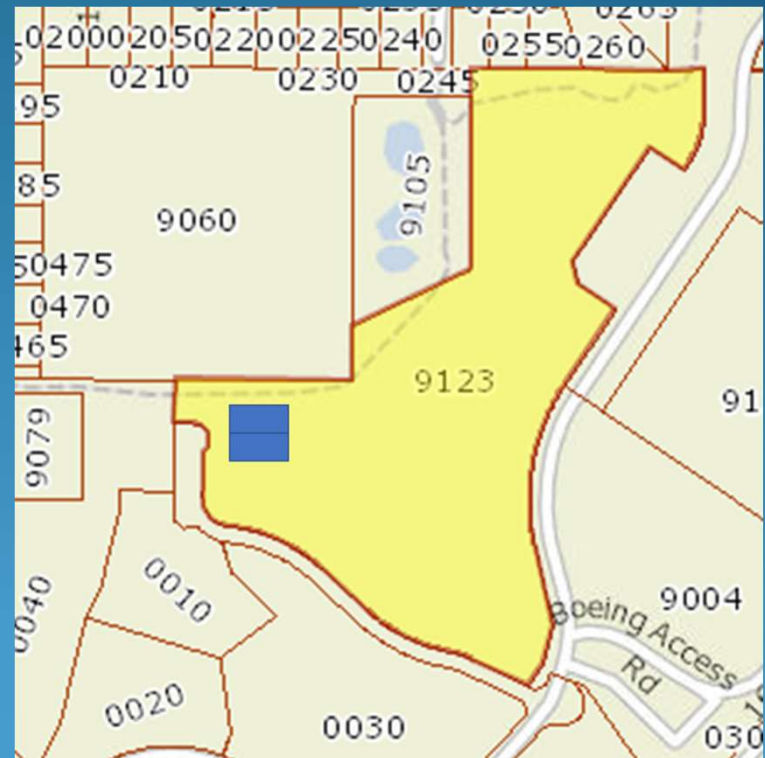


# 2022 Bellevue Airfield Park Master Plan

- A Master Plan update for the Bellevue Airfield Park will be written in the next few months
- It will include the development of an aquatic center and large ball fields
- We propose to include the development of 8 dedicated pickleball courts in the 2022 Airfield Park Master Plan

# Rationale for Pickleball Courts in Airfield Park

- 8 dedicated pickleball courts
  - Require 1/3 acre (120 by 120 feet) (blue area in figure)
  - Occupy only 2% of Parcel 9123 (yellow area in figure) in the Park
  - Small footprint of the 8 pickleball courts (blue) relative to Parcel 9123 (yellow) is evident in the figure
- Pickleball court usage will utilize infrastructures (parking and restrooms) that are needed for the ball fields and aquatic center



# Phases of Airfield Park Development

- The multimillion dollar aquatic center will likely take many years to complete
- We propose to have pickleball courts (and maybe also the ball fields) developed in the first phase of the Airfield Park development
  - Pickleball courts are relatively inexpensive to build and maintain
    - We estimate it requires about \$300k to build 8 dedicated pickleball courts
    - They require maintenance efforts similar to tennis courts
    - Potential co-funding by Microsoft, T-Mobile, King County Parks Levy Grants and Washington State Recreation & Conservation Office
  - It might be easier to find a small piece of land that has stopped settling (the land parcel is an old landfill)
  - Completion of the courts would provide early success story for the Airfield Park development which resides in an underserved subarea in Bellevue

# Contact Information

- This proposal is supported by Eastside pickleball players including many Bellevue residents
- David Lai [dlai@ocean.lai@gmail](mailto:dlai@ocean.lai@gmail.com) 425-891-4346
- Leslie Wang [jlw777@comcast.net](mailto:jlw777@comcast.net)
- Barbara Carey [barbcarey97@comcast.net](mailto:barbcarey97@comcast.net)
- Lisa Tsang [lisa.tsang@outlook.com](mailto:lisa.tsang@outlook.com)
- Lynn Kaner [lynnkaner@comcast.net](mailto:lynnkaner@comcast.net)
- Jessica Prince [jgprince@hotmail.com](mailto:jgprince@hotmail.com)
  - (Board member of the Seattle Metro Pickleball Association)